



**MARTIN  
COMMERCIAL  
GROUP**

Commercial Real Estate Services



# AVAILABLE FOR LEASE

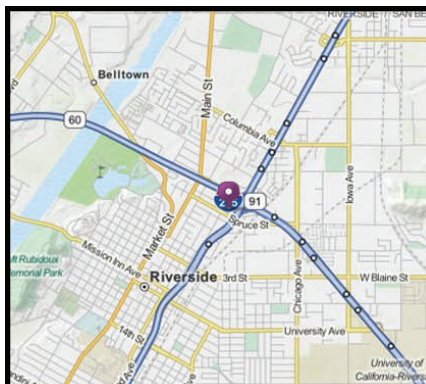
954 - 5,932 SQ. FT. MULTI TENANT INDUSTRIAL & OFFICE BUILDINGS



**2280-2299 Russell Street, Riverside, CA**  
**2239-2261 Business Way, Riverside, CA**

## RUSSELL STREET BUSINESS CENTER

- Units ranging from 954 - 5,932 SF
- Offices w/Warehouse
- 100% Office Suites Also Available
- Fully Air Conditioned Offices
- Mezzanines in select suites
- G/L Loading Doors
- Skylinght(s)
- Ample Parking
- Professionally Landscaped
- Professionally Managed Complex
- Easy Access to 60, 91 & 215 Fwys.



For More Information  
Please Contact:

**ERIN LAGOMARSINO**

elagomarsino  
@martincommercialgroup.com  
DRE # 00992436

**951.684.1251**

3363 Chicago Avenue  
Riverside, CA 92507

*Since 1953...  
Orange County ~ Inland Empire*

The information contained herein has been obtained from sources we deem reliable. While we have no reason to doubt its accuracy, we do not guarantee it.



MARTIN  
COMMERCIAL  
GROUP

Commercial Real Estate Services



For More Information  
Please Contact:

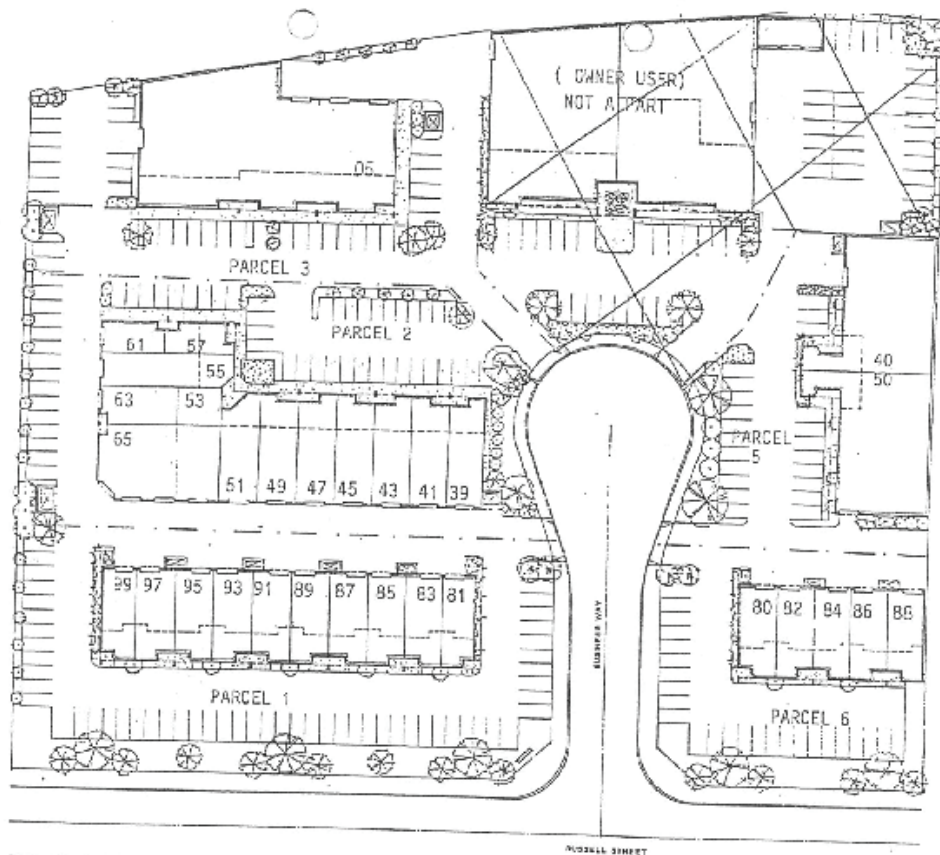
**ERIN LAGOMARSINO**

elagomarsino  
@martincommercialgroup.com  
DRE # 00992436

**951.684.1251**

3363 Chicago Avenue  
Riverside, CA 92507

## RUSSELL STREET BUSINESS CENTER



**WWW.MARTINCOMMERCIALGROUP.COM**