



MARTIN  
COMMERCIAL  
GROUP

Commercial Real Estate Services

# AVAILABLE FOR LEASE

3,890 SQ. FT. MULTI-TENANT INDUSTRIAL BUILDING



## 41735 Rider Way, Temecula

- Corner Building w/Frontage
- Large Open Showroom
- 3 Private Offices
- Large Open Warehouse
- 100% Fully Air Conditioned Space
- 2 Restrooms (Office/Warehouse)
- 1 Rear GL Loading Door
- 15' Warehouse Clearance
- Two Skylights
- Professionally Managed
- Easy Access 215/15 Freeways

For More Information  
Please Contact:

**JACKIE BEAUCHAMP**

jbeauchamp@mcgre.com  
DRE#01461175

**951.684.1251**

*Since 1953...  
Orange County ~ Inland Empire*

The information contained herein has been obtained from sources we deem reliable. While we have no reason to doubt its accuracy, we do not guarantee it.

**WWW.MCGRE.COM**



MARTIN  
COMMERCIAL  
GROUP

Commercial Real Estate Services



For More Information  
Please Contact:

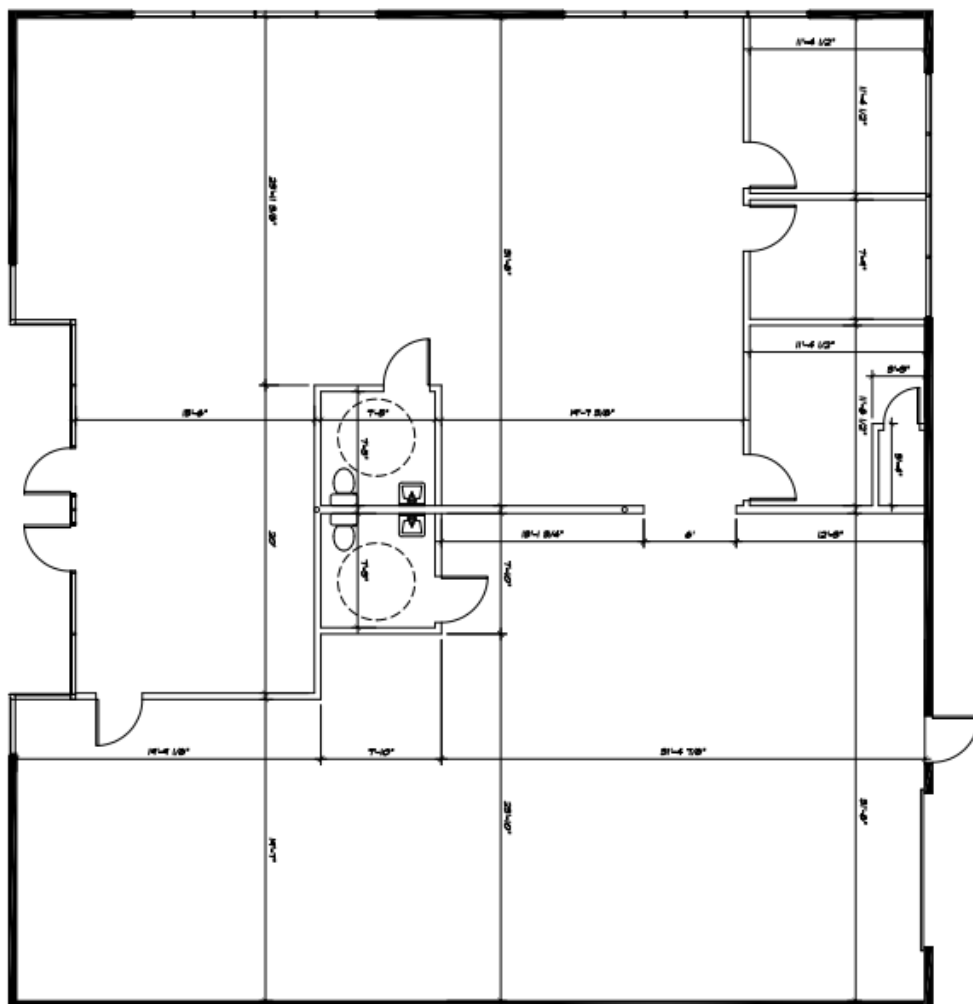
**JACKIE BEAUCHAMP**

jbeauchamp@mcgre.com  
DRE#01461175

**951.684.1251**

*Since 1953...  
~Orange County ~  
Inland Empire*

## 41735 Rider Way, Temecula



**WWW.MCGRE.COM**